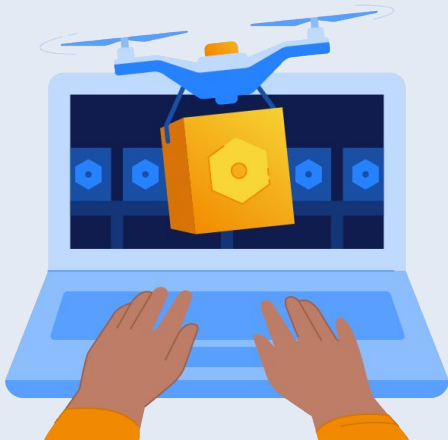


IQ Server Stages & Policy Evaluations

We have compiled this guide as a recommendation, however it is possible to use any stage for any purpose - the system is flexible.

Select a question to learn more about each stage.



Develop

Source

Build

Release

What's the purpose of each stage?

What's evaluated and how often is it evaluated?

Is IQ Server looking at the deltas between subsequent reports as the basis for email notifications and Jira issue creation?

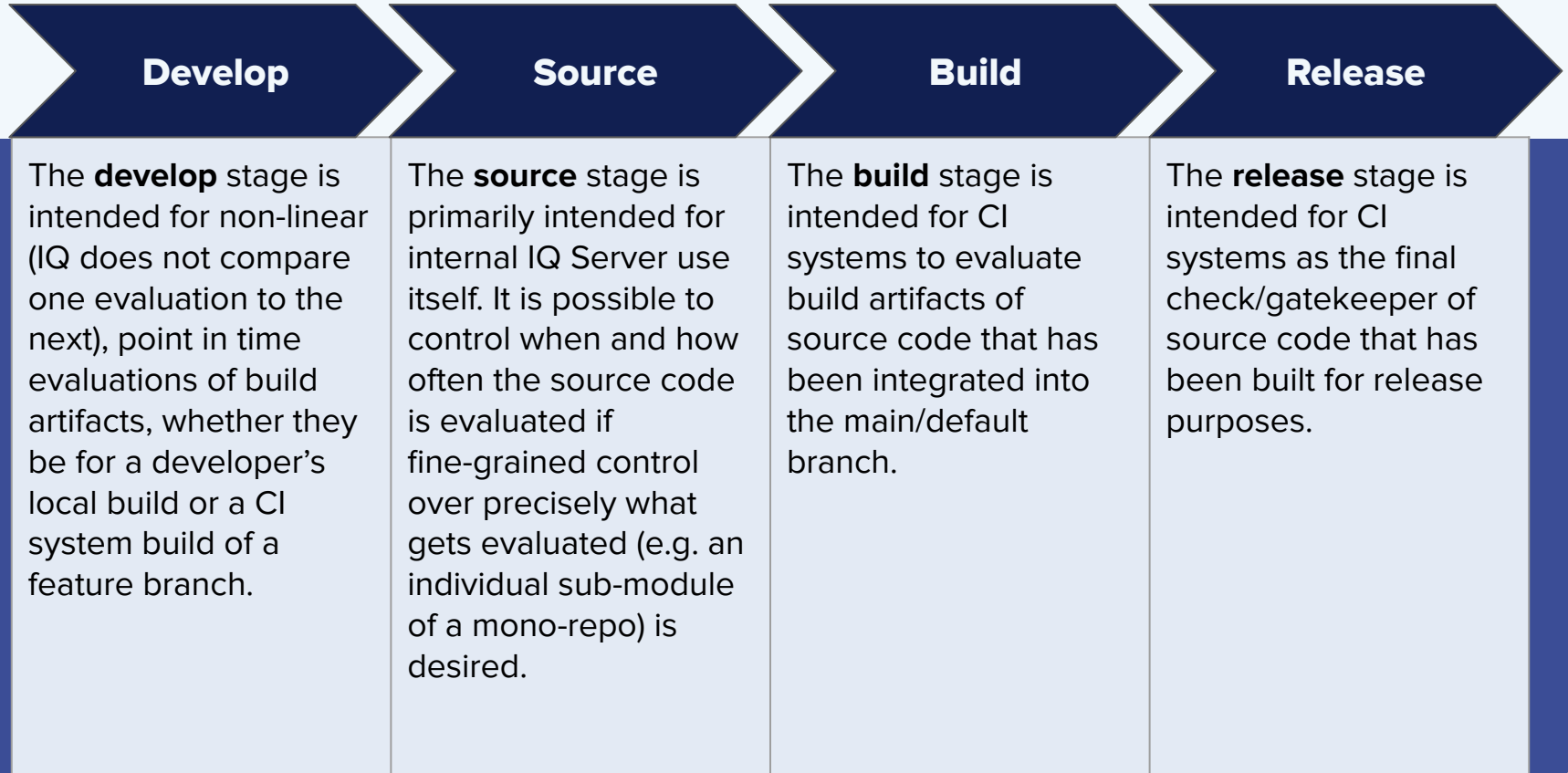
How restrictive is policy enforcement at each stage?

Do the evaluation reports show on IQ Reports page?

How does IQ Server use each stage?

What tooling is recommended at each stage?

What's the purpose of each stage?

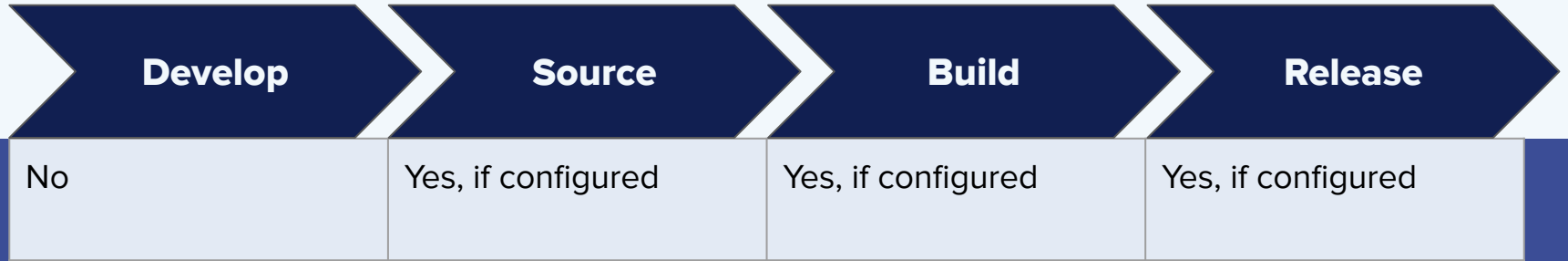


What's evaluated and how often?

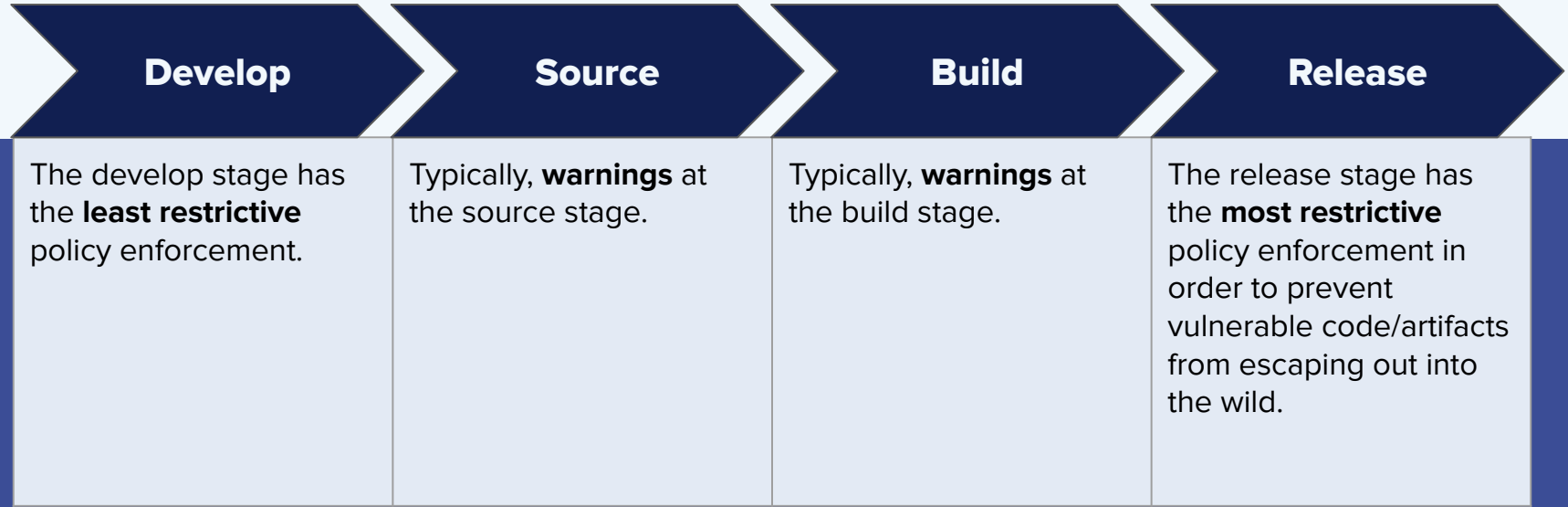
	Develop	Source	Build	Release
What's evaluated?	<ul style="list-style-type: none"> Local developer builds CI feature branch build 	The source code itself (the manifest files)	CI built source code (most likely of the main/primary branch)	CI built source code, most likely of the main/primary branch
How often is it evaluated?	<p>At the Develop stage:</p> <p>On demand</p> <p>In the case of developer code - whenever they decide to run a policy evaluation.</p> <p>In the case of CI for feature branches - typically whenever a new change is merged into a feature branch, which triggers a CI build of that branch, which causes a policy evaluation to occur.</p>	<p>At the Source stage:</p> <p>Instant Risk Profile will do an initial, one-time policy evaluation.</p> <p>Continuous Risk Profile will do an evaluation at a configurable interval, which by default is once daily.</p>	<p>At the Build stage:</p> <p>CI builds usually occur whenever new code is integrated/merged into the main branch.</p> <p>CI builds can also be configured to run on a scheduled basis, such as nightly. These are good for projects that don't have regular development but still want updated policy evaluations to identify new risk.</p>	<p>At the Release stage:</p> <p>Evaluation at the release stage are <i>typically</i> only on demand, although some organizations may have an automated continuous release process.</p>



Is IQ Server looking at the deltas between subsequent reports as the basis for email notifications and Jira issue creation?



How restrictive is policy enforcement?

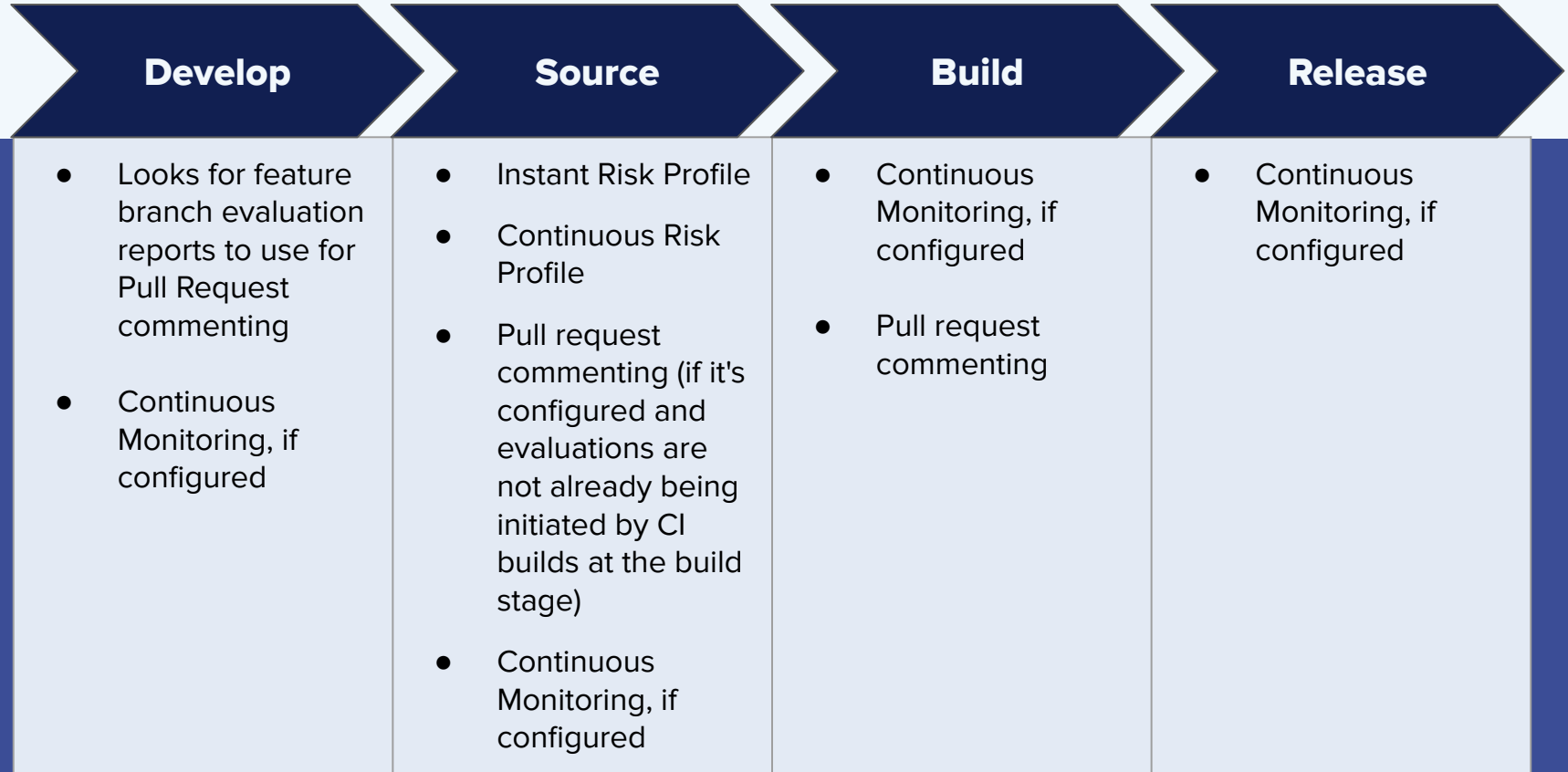


Do the evaluation reports show on IQ Reports page?

Develop	Source	Build	Release
No	Yes	Yes	Yes



How does IQ server use each stage?



Next: What tooling is recommended at each stage?



What tooling is recommended at each stage?

Develop	Source	Build	Release
<p>For local developer builds:</p> <ul style="list-style-type: none">● IQ CLI tool● Maven-clm plugin <p>For CI system feature branch builds:</p> <ul style="list-style-type: none">● IQ CI plugins● Maven-clm plugin	<p>None - it's automatic.</p> <p>It is possible to use the IQ Server API to initiate source control evaluations from your systems.</p> <p>In order to do source control evaluations as part of CI processes use the source stage and use:</p> <ul style="list-style-type: none">● IQ CI plugin● Maven-clm plugin	<ul style="list-style-type: none">● IQ CI plugins● Maven-clm plugin	<ul style="list-style-type: none">● IQ CI plugins● Maven-clm plugin

